



UPM
UNIVERSITI PUTRA MALAYSIA
BERILMU BERBAKTI



STUDY ENGLISH • EXPLORE • SUCCEED

ELS-UPM Housing 2018

- The Academia
- The Heritage Condominium
- Univ 360
- Mutiara Residence
- Flexis One South



ELS-UPM Housing 2018



Inside Campus

KMR One Putra

Kolej 13

Pusat Latihan Mardi



The Academia

Approximately 15 minutes bus ride from UPM, **The Academia** is located on top of the South City Shopping Complex, where there are several international restaurants and a well stocked supermarket.

The Academia is also easily access to other commercial, entertainment and sports facilities nearby.

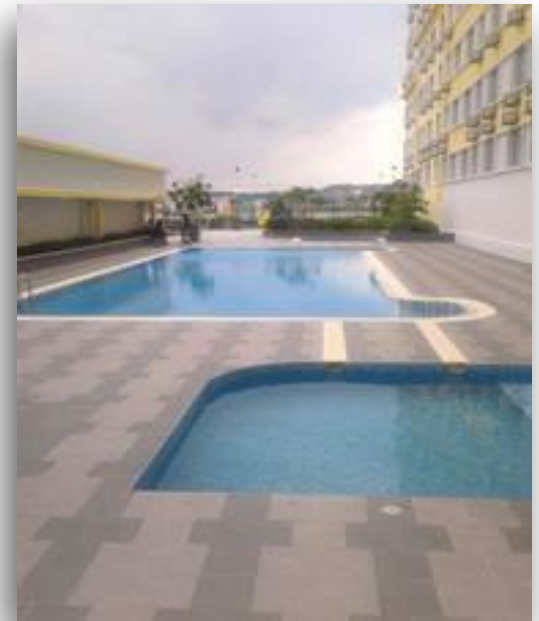
UPM Shuttle Bus services are available for UPM students from **The Academia** straight into the campus. The commuter train station is 15- minute walk away.



Building Facilities



Gymnasium
Children
Playground Multi-
Purpose Halls
Swimming &
Wading Pools
Barbeque Area
Jogging Track
Tennis Court Car
Parks
24-hour Security
& CCTV Cameras
Shopping Complex



Unit Facilities

Living Room

- Sofa
- Coffee Table
- Dining Table
- Ceiling Fan
- Curtains

Bedrooms

- Twin beds
- Wardrobes
- Ceiling Fans/ Air-Conditioned
- Curtains

Dining - Kitchen

- Dining Table
- Kitchen Cabinets
- Refrigerator



* Water heaters in all bathrooms



Unit Types & Pricing

Type A

- 3 Air-Conditioned Bedrooms
- 2 Bathrooms

Studio

- 1 Air-Conditioned Bedroom
- Furnished Living Room

Type B

- 3 - 5 Bedrooms
- 2 - 3 Bathrooms
- Ceiling Fans

- Television, stove and washing machine NOT provided in the unit

**** Minimum stay is 6 months**

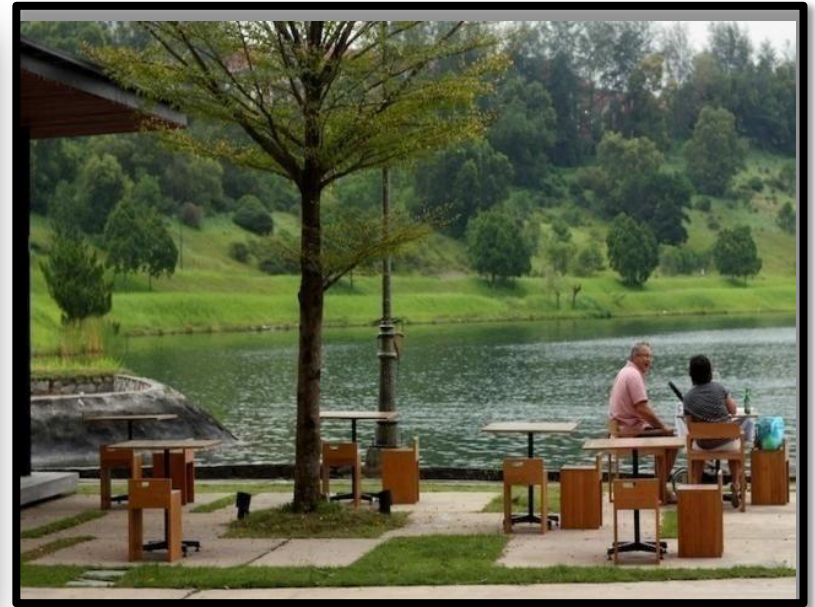
Rentals Per Month (Approximately)

TYPE	(RM)
TYPE A	1550 per unit
TYPE B	1700 – 2200 per unit
STUDIO	1200 per unit
Rental Deposit	2.5-month rents

NOTE: - Tenants to bring own bed sheets and pillow cases
- Electricity bill is by prepaid card system
- Water bill is NOT included in the rent

The Heritage Condominium

Approximately 15 minutes away from to ELS – UPM, **The Heritage** is a luxury condominium complex located at Seri Kembangan, near the Mines Resort City and the South City Shopping Complex. It is a 5-minute walking distance to a commuter train station.



Building Facilities

Barbecue Area
Cafeterias and
Restaurants
Covered Car Parks
Gymnasium
Children
Playground
Jogging Track
Sauna 3 Swimming
Pools & Wading
Pools Tenni Court
24-Hour Security &
Cameras



Unit Facilities



Living Room

- Sofa
- Coffee Table
- Dining Table
- Television
- Air-Conditioned



Kitchen

- Cabinets
- Cooking Stove
- Refrigerator

2-3 Fully furnished air-conditioned bedrooms



Unit Types & Pricing

Apartments

- 2-3 Air-Conditioned Bedrooms
- 2 Bathrooms with Water Heaters
- Fully Furnished Living Room and Dining Area with Television

Studio

- 1 Air-Conditioned Bedroom
- 1 Bathroom with Water Heater
- Living/ Dining Areas
- Kitchen Cabinets, Stove, Refrigerator and Washing Machine

Rentals Per Month (Approximately)	
TYPE	(RM)
APARTMENTS	2000 – 2500/ per unit
STUDIO	1600/ per unit
DEPOSIT	2- month rentals
NOTE: The rent is exclusive of utility bills and deposits	

Eastlake

East Lake Residence consists of 5 blocks with 634 units of well-designed apartments unit. Apart from standard unit, Approximately 15 minutes away from to ELS – UPM. 5-min walk to South City Plaza (with Parkson, Giant hypermarkets), restaurants, business centre. 5-min drive to Mines Shopping Complex and KTM serdang.



UNIT TYPES:

- 2 + 1 Bedroom with kitchen and 2 bathrooms

Rentals Per Month (Approximately)	
TYPE	(RM)
2+1 Bedroom	2200
NOTE: <ul style="list-style-type: none">• Contract 1-year• 2 months security deposit,• ½ month utility deposit & advance first month rent.• Tenant to pay Agreement Fee (Rm350) & Access Cards (RM60 each access card)• No TV & Washing Machine	

Unit Facilities



Living Room

- Sofa
- Coffee Table
- Dining Table
- Television
- Air-Conditioned



Kitchen

- Cabinets
- Cooking Stove
- Refrigerator

2-3 Fully furnished air-conditioned bedrooms



Building Facilities

Barbecue Area
Cafeterias and
Restaurants
Covered Car Parks
Gymnasium
Children
Playground
Jogging Track
Sauna 3 Swimming
Pools & Wading
Pools Tenni Court
24-Hour Security



One south

Onesouth is Approximately 15 minutes bus ride from UPM. Onesouth development also features street mall impression while offering bus services to Mines shopping centres, Serdang KTM, Sg. Besi LRT stations and Bukit Jalil LRT to the people who live, work or shop here.



One south

UNIT TYPES:

- 2 + 1 Bedroom with kitchen and 2 bathrooms

Rentals Per Month (Approximately)	
TYPE	(RM)
2+1 Bedroom	2300

NOTE:

- Contract 1-year
- 2 months security deposit,
- ½ month utility deposit & advance first month rent.

Unit Facilities



Living Room

- Sofa
- Coffee Table
- Dining Table
- Television
- Air-Conditioned



2-3 Fully furnished air-conditioned bedrooms



Kitchen

- Cabinets
- Cooking Stove
- Refrigerator

Building Facilities

Cafeterias and
Restaurants
Covered Car Parks
Gymnasium
Children
Playground
3 Swimming Pools
& Court
24-Hour Security



Univ 360

East Lake Residence consists of 5 blocks with 634 units of well-designed apartments unit. Approximately 15 minutes away from to ELS – UPM. And 5-min walk to South City Plaza (with Parkson, Giant hypermarkets), restaurants, business centre. About 5-min drive to Mines Shopping Complex and KTM serdang.



Univ 360

Approximately 10 minutes away from to ELS – UPM, **Univ 360 Place** is a contemporary modern designer small office flexi office also known as D-SOFO located in Serdang South.

Univ 360 Place is accessibility connected with several major highways: North-South Highway, BESRAYA, SILK SKVE and LDP. It is a 8-minute distance to a commuter train station.

UNIT TYPES:

- 2 + 1 Bedroom with kitchen and 2 bathrooms

Rentals Per Month (Approximately)	
TYPE	(RM)
2+1 Bedroom	2000
NOTE: <ul style="list-style-type: none">• Contract 1-year• 2 months security deposit,• ½ month utility deposit & advance first month rent.• Tenant to pay Agreement Fee (Rm350) & Access Cards (RM60 each access card)• No TV & Washing Machine	

Unit Facilities



Master Bedroom



Living room



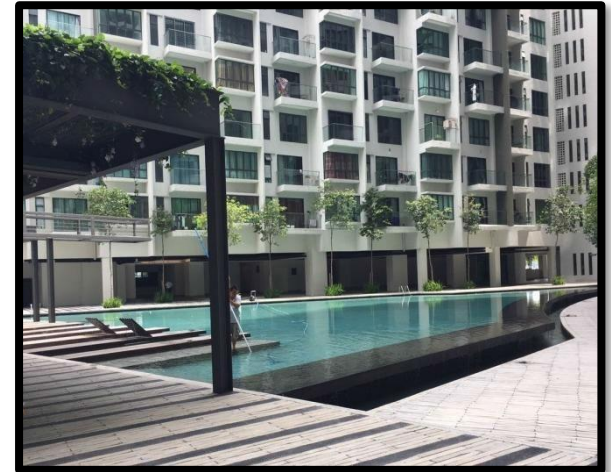
Kitchen



Bedroom



Bathroom



Pool

Mutiara Residence

Mutiara Residences are fully furnished apartments that are perfectly situated between several institutions of learning. From universities such as UPM, APIIT, UNITEN, UNIKL, Open University, Universiti Pertahanan Nasional, IUKL and IMU to colleges such as SEGI College, IUCN, FTMS College Malaysia, Royal Military College and Portman College.

Mutiara Residences are primed to be one of the best residence options for students in the area.



Unit Facilities (Apartment)



Living and Dining Room

Sofa
Air-Conditioned
Ceiling Fan
Dining Table
Curtains

Kitchen

Cabinets
Cooking Stove
Refrigerator
Washing machine



Building Facilities

Cafeterias and
Restaurants Covered
Car Parks Gymnasium
Children Playground
Swimming Pools
24-Hour Security &
CCTV Cameras



Mutiara Residence

Approximately 10 minutes away from to ELS – UPM, **Mutiara Residence** is a contemporary modern designer small office flexi office also known as D-SOFO located in Serdang South.

UNIT TYPES:

- 3 Bedrooms Apartment
- 4 Bedrooms Apartment

Rentals Per Month (Approximately)	
TYPE	(RM)
3 Bedrooms	1500
4 Bedrooms	1666.70
NOTE: <ul style="list-style-type: none">• Contract 1-year• 2 months security deposit,• Utility deposit & advance first month rent RM1000• Tenant to pay Agreement Fee (Rm350) & Access Cards (RM63 each access card)	

Kolej 13

Kolej 13 is a dormitory type accommodation within UPM student residential complex. Although not within walking distance to ELS-UPM, there are regular UPM shuttle bus services (every 30 minutes) from the Kolej to all major parts of the University. It is a self- contained complex with shops, eating outlets, and other student amenities.

ROOM FACILITIES

Dorm type: 4 – 6 beds (partitioned cubicles)

Ceiling Fan

Wardrobe

Desk

Shared Facilities:

Bathrooms and Toilets

Lounge and TV Areas

Laundry Room (Washing Machines& Driers)

Rental Per Month (Approximately)	
RENTAL	RM1600 per unit
BEDDING CHARGE	RM 5200 per unit

Building Facilities



KMR One Putra Residence

UPM International Guest House is conveniently located inside the campus within 10 minutes walking distance to ELS-UPM.

UNIT TYPES: (All Wi-Fi Ready)

- Apartment with 2 Bedrooms, 1 Bathroom and kitchen
- Apartment with 1 Bedroom, 1 Bathroom and kitchen
- Studio (sharing bathroom)

Rental Per Month (Approximately)	
Apartment with 2 bedroom (Bed, cabinet, dining table, study table, refrigerator and aircond)	RM 1200 per unit*
Apartment with 1 bedroom Apartment with 2 bedroom (Bed, cabinet, dining table, study table, refrigerator and aircond)	RM1000 per unit*
Studio (Bed, cabinet & study table)	RM 600 per unit*

Facilities

Living room & Dining Hall



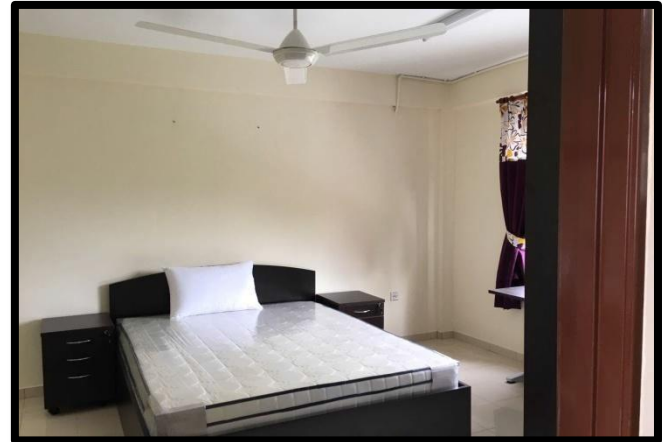
Kitchen



Bathroom



Master Bedroom



Bedroom



MARDI Training Centre Accommodation

MARDI training centre is located approximately 900m from ELS UPM. Apart from facilities, it also provides accommodation similar to hotels.

ROOM FACILITIES

Room type: 2-3 pax per room

Aircond

Wardrobe

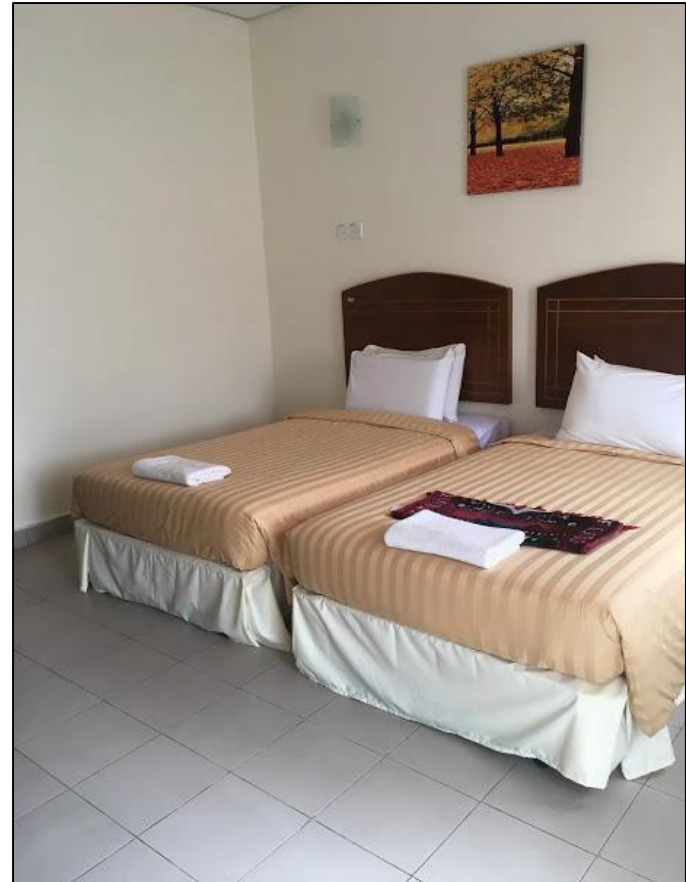
Desk

Bathroom attach

Rental Per Month (Approximately)	
Rimbun (2 singles Bed)	RM120 per nite
Danau (3 singles bed)	RM 125 per nite

Facilities

Bedroom



Gymnasium & Squash Court





**ELS LANGUAGE CENTRES @
UPM GROUND FLOOR,
BLOCK A, PUTRA 10.6,
NORTH CAMPUS, UNIVERSITY
PUTRA MALAYSIA**

Thank you
We look forward to welcoming
you to study with us at ELS-
UPM! 😊